

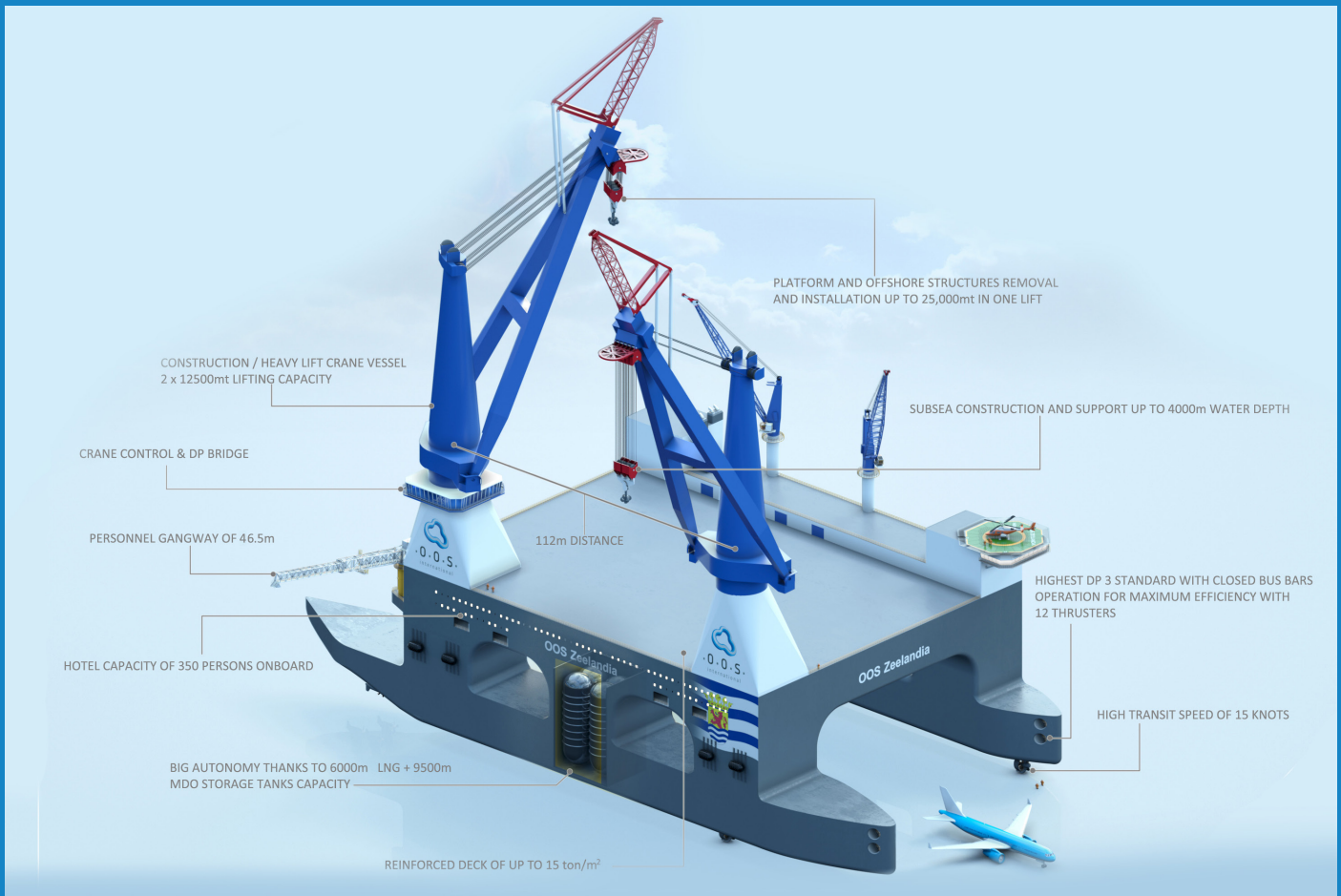


OOS INTERNATIONAL B.V.

SEMI SUBMERSIBLE HEAVY LIFT VESSEL



OOS ZEELANDIA



OVERVIEW

The OOS Zeelandia is a large, state-of-the-art, multifunctional, dynamically positioned construction semisubmersible heavy lift crane vessel. It is designed to transport topsides over 23,000mt on the main deck to the installation site and install it in one lift. The big distance between the cranes of 112.5m will permit large modules to be lifted on the main deck. With the most sophisticated dual fuel (LNG + MDO) engines it will not only mean the best efficiency ever obtained for this kind of vessel but also contribute to clean air by impressive numbers.

Reduction of exhaust gas emission on annual basis is expected to be 15,000mt less CO₂; 71mt less SO_x (only 1mt instead of 72mt from the same engines running on MDO) and 62,000mt less NO_x. This vessel can be utilized for subsea installation. Subsea manifolds up to 2,300mt can be installed at 1,500m and 1,200mt at 4,000m water depth.

The winterization of the main deck and double bottoms by thermal oil and Ice Class A0 enables the vessel to operate in an Arctic environment. This makes the OOS Zeelandia the first vessel of this type. It has a large hotel capacity with the highest standards accommodation integrated in the deck box.

SEMI-SUBMERSIBLE SPECIFICATIONS

- Hotel capacity for up to 500 persons on board
- Construction/heavy lift crane vessel 2x12,500mt lifting capacity
- High transit speed of 15 knots
- Quick ballast system with deck dump tanks for pick up and landing of loads
- Subsea construction and support up to 4,000m water depth
- Platform and offshore structures removal and installation
- Highest DP-3 standard with "Close bus-bars" operation for maximum efficiency
- Low running costs of around 25% lower fuel consumption in DP and transit modes
- Dual fuel engines with SCR when operating on MDO and LNG for clean air
- Excellent motion and position keeping characteristics assured by 12 thrusters
- Very big autonomy due to 6,000m³ LNG + 9,500m³ MDO storage tanks capacity
- 112.5m distance between the cranes

SSCV SPECIFICATION

OOS ZEELANDIA

GENERAL

| | |
|--------------------|---|
| Name | : OOS Zeelandia |
| Flag/ Port of Reg. | : Marshall Islands |
| Designers | : CMHI |
| Classification | : ABS |
| Notations | : XA1 |
| | Accommodation Service; Column Stabilized Unit, Construction and Maintenance Service, Crane Service; XAMS; XACCU; XDPS-3; UWILD CRC; HAB+(MOU); EHS-P; IHM; GP; SKP;PMP+; ECG-SCR-TBA; ISQM; Cold Climate; LNG Ready |
| Length | : 225,00 m |
| Beam | : 117,00 m |
| Depth Molded | : 16,50 m |
| Main Deck Height | : 50,25 m |
| Deck Box Height | : 15,75 m |
| Transit Draught | : 11,50 m |
| Opeating Draught | : 26,00 m |
| Heavy Lift Draught | : 28,00 m |
| Ice Class | : A0 |

CARGO CAPACITIES

| | |
|--------------------|---------------------------|
| Clear Deck Space | : 11.000 m ² |
| Deck Load | : 15 ton / m ² |
| Variable Deck Load | : 20.000 tons |
| Fuel - MDO | : 9.500 tons |
| Fuel - LNG | : 6.000 m ³ |
| Potable Water | : 1.200 tons |
| Lub. Oil | : 60 tons |

MACHINERY/PROPULSION

| | |
|-------------------|---|
| Main Engines | : 12 x 7.100 kW / 6.6 kV Dual Fuel (LNG + MDO) |
| LNG Tanks | : 6.000 m ³ (2 x 3.000 m ³) |
| Propulsion | : 5 x 5.800 kW Stern Thrusters 3 x 6.500 kW FWD Retractable Thrusters 4 x 2.500 kW FWD Tunnel Thrusters |
| Steering Speed | : Stern Azimuthal Thrusters : 15,6 knots |

SAFETY

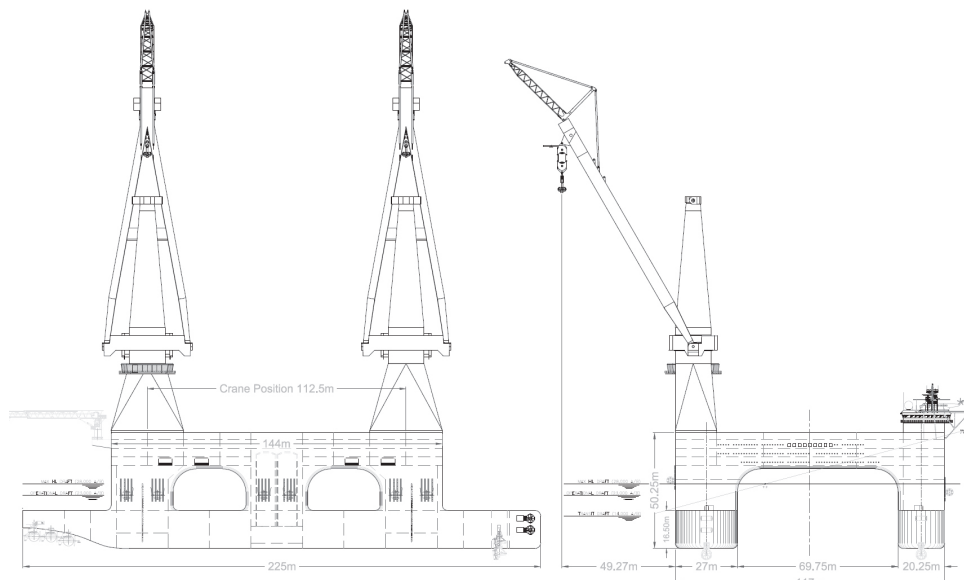
| | |
|------------|---------------------------------------|
| Life Boats | : 8 x 125 POB Freefall (+1x 70POB) |
| Life Rafts | : For up to 500 POB |

ACCOMMODATION

| | |
|---------|---|
| 500 POB | : 250 x 1 Man daylight cabins : 125 x 2 Man cabins |
|---------|---|

DECK MACHINERY

| | |
|-----------------|--|
| Main Deck Crane | : 2 x 12.500mt @ 45 m |
| Deck Crane | : 2 x Provisions crane 60 mt @ 40 m |
| Gangway | : 46,5 m Telescopic Gangway |
| Towing | : 4 x SMIT Tow Brackets 500 mt SWL |





.O.O.S.
international



HOLDING OOS INTERNATIONAL GROUP B.V.

The Netherlands

Head Office The Netherlands

OOS International B.V.
Oostkapelseweg 4
4353 EH Serooskerke
P.O. Box 40
4353 ZG Serooskerke

E: Chartering@oosinternational.com
T: +31 (0) 118 726 200

Chamber of Commerce No. 20149791
VAT No. NL8204.64.624.B.01

The Netherlands

OOS Asia Pacific Pte. Ltd.

OOS Singapore

Office 3791 Jalan Bukit Merah
#09-24 [E-Centre @ Redhill]
Singapore 159471
T: +65 6732 1983

OOS China

No.1 Xin An Jiang Road, Bin Jiang Street
Haimen, Jiangsu Province
P.R. China
P.C. 226116
T: +86 0513 8128 7430

OOS International do Brazil Servicos Maritimos Ltda.

Rua Internacional
261 - Vale Encantado Macaé - Rio de
Janeiro, Brazil
CEP 27.933-377
T: +55 22 2020 0500