



OOS INTERNATIONAL B.V.

SEMI SUBMERSIBLE HEAVY LIFT VESSEL



revision 5.6

OOS ZEELANDIA



OVERVIEW

The OOS Zeelandia is a large, state-of-the-art, multifunctional, dynamically positioned construction semisubmersible heavy lift crane vessel. It is designed to transport topsides over 20.000 mt on the main deck to the installation site and install it in one lift. The big distance between the cranes of 112,5 m will permit large modules to be lifted on the main deck. With the most sophisticated dual fuel (LNG + MDO) engines it will not only mean the best efficiency ever obtained for this kind of vessel but also contribute to clean air by impressive numbers.

Reduction of exhaust gas emission on annual basis is expected to be 15.000 mt less CO₂; 71 mt less SO_x (only 1 mt instead of 72 mt from the same engines running on MDO) and 62.000 mt less NO_x. This vessel can be utilized for subsea installation. Subsea manifolds up to 4.600 mt can be installed at 1.000 m and 480 mt at 4.000 m water depth.

The winterization of the main deck and double bottoms by thermal oil and Ice Class A0 enables the vessel to operate in an Arctic environment. This makes the OOS Zeelandia the first vessel of this type. It has a large hotel capacity with the highest standards accommodation integrated in the deck box.

SEMI-SUBMERSIBLE SPECIFICATIONS

- Excellent motion and position keeping characteristics assured by 12 thrusters
- Construction/heavy lift crane vessel 2 x 12.500 mt lifting capacity
- Hotel capacity for up to 500 persons on board
- High transit speed of 15 kn
- Quick ballast system with deck dump tanks for pick up and landing of loads
- Subsea construction and support up to 4.000 m water depth
- Platform and offshore structures removal and installation
- Highest DP-3 standard with "Close bus-bars" operation for maximum efficiency
- Low running costs of around 25% lower fuel consumption in DP and transit modes
- Dual fuel engines with SCR when operating on MDO and LNG for clean air
- Very big autonomy due to 6.000 m³ LNG + 9.500 m³ MDO storage tanks capacity
- 112,5 m distance between the cranes

SSCV SPECIFICATION

OOS ZEELANDIA

GENERAL

Name	: OOS Zeelandia
Flag/ Port of Reg.	: Marshall Islands
Designers	: CMHI
Classification	: ABS
Notation	: ✕A1, Column-Stabilized Unit(N), ✕AMS, ✕ACCU, ✕DPS-3, Accommodation Service, Construction and Maintenance Service, Crane service, BWT+, CCO(-20,-40), CPS, CRC(HC-Subsea-PL,OC,N), EGC-SCR, EHS-P, ENVIRO-OS, GFS(DFD), HAB+(MODU), HELIDK(N), IHM, ISQM, PMP+, SKP, UWILD, Ice Class A0
IMO	: ...
Length	: 230,00 m
Beam	: 117,00 m
Depth Molded	: 16,50 m
Main Deck Height	: 50,25 m
Deck Box Height	: 15,75 m
Transit Draught	: 12,2-14 m
Operating Draught	: 17-23 m
Heavy Lift Draught	: 28,00 m
Ice Class	: A0

CARGO CAPACITIES

Clear Deck Space	: 11.000 m ²
Deck Load	: 15 ton/m ²
Variable Deck Load	: 20.000 t
Fuel - MDO	: 14.400 t
Fuel - LNG	: 6.170 m ³
Potable Water	: 2.687 t
Lub. Oil	: 60 t

MACHINERY/PROPULSION

Main Engines	: 12 x 7.100 kW / 6.6 kV Dual Fuel (LNG + MDO)
LNG Tanks	: 6.000 m ³ (2 x 3.000 m ³)
Propulsion	: 5 x 5.800 kW Stern Thrusters 3 x 6.500 kW FWD Retractable Thrusters 4 x 3.000 kW FWD Tunnel Thrusters
Steering Speed	: Stern Azimuth Thrusters : Up to 15,6 kn

SAFETY

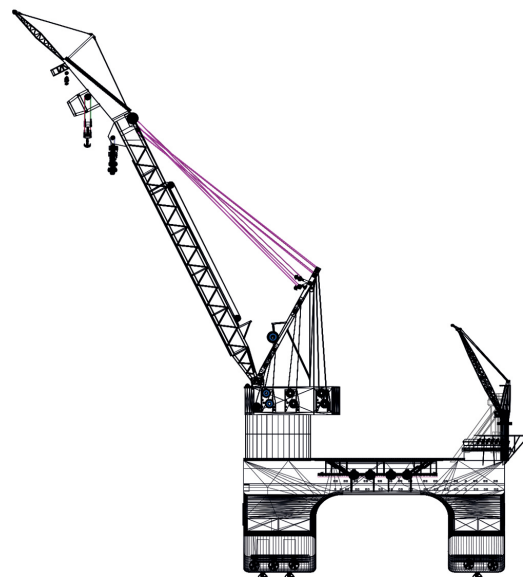
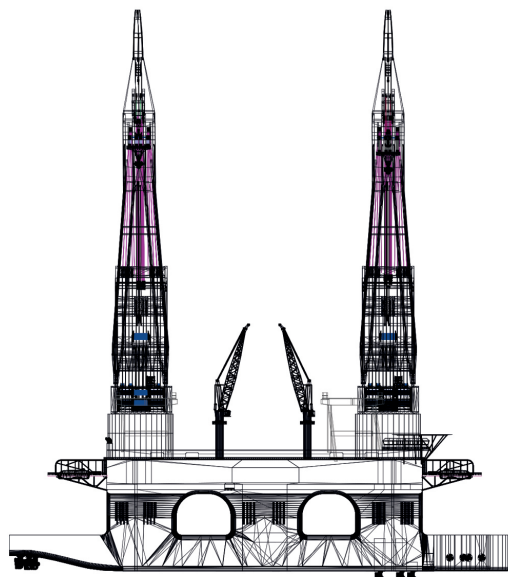
Life Boats	: 8 x 125 POB Freefall (+1x 70POB)
Life Rafts	: For up to 500 POB
Escape Chutes	: To comply with NMA For escape chutes

ACCOMMODATION

492 POB	: 60 x 1 Man Cabins : 216 x 2 Man Cabins
---------	---

DECK MACHINERY

Main Deck Crane	: 2 x 12.500 mt @ 55 m
Deck Crane	: 2 x Service crane 60 mt @ 40 m
Optional Towing	: 46,5 m Telescopic Gangway : 4 x SMIT Tow Brackets 500 mt SWL





.O.O.S.
international



HOLDING OOS INTERNATIONAL GROUP B.V.

The Netherlands

Head Office The Netherlands

OOS International B.V.
Oostkapelseweg 4
4353 EH Serooskerke
P.O. Box 40
4353 ZG Serooskerke

E: Sales@oosinternational.com
T: +31 (0) 118 726 200

Chamber of Commerce No. 20149791
VAT No. NL8204.64.624.B.01

The Netherlands

OOS Asia Pacific Pte. Ltd.

OOS Singapore

Office 3791 Jalan Bukit Merah
#09-24 [E-Centre @ Redhill]
Singapore 159471
T: +65 6732 1983

OOS China

No.1 Xin An Jiang Road, Bin Jiang Street
Haimen, Jiangsu Province
P.R. China
P.C. 226116
T: +86 0513 8128 7430

OOS International do Brazil Servicos Maritimos Ltda.

Rua Internacional
261 - Vale Encantado Macaé - Rio de
Janeiro, Brazil
CEP 27.933-377
T: +55 22 2020 0500

www.oosinternational.com