



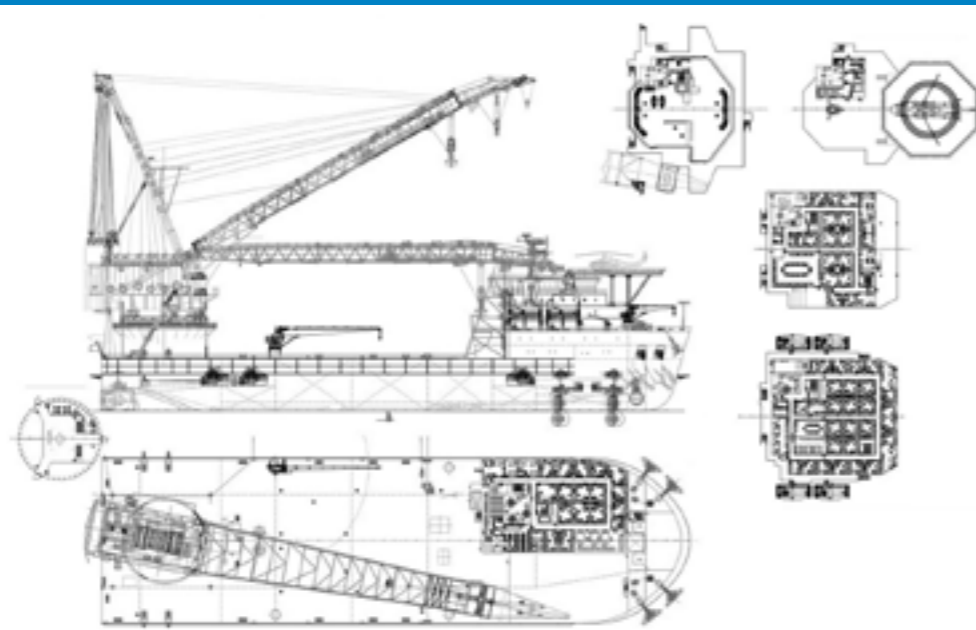
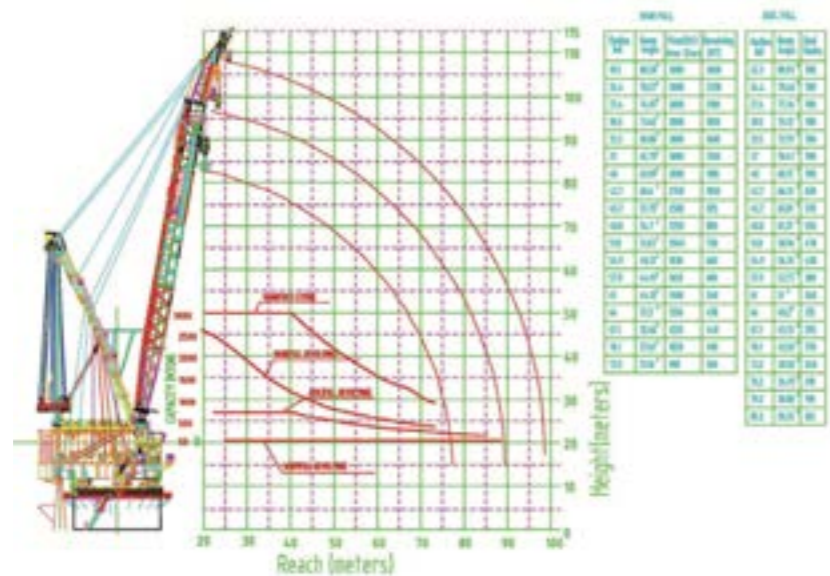
OOS INTERNATIONAL B.V.

HEAVY LIFT CRANE VESSEL



OOS WEI LI

OOS WEI LI



OVERVIEW

The "OOS Wei Li" is self-propelled, special purpose, Heavy Lift Crane Vessel.

It is designed for offshore heavy lift jobs like installation, decommissioning and servicing of offshore platforms and all other kind of offshore installations. It is fitted with Kongsberg DP2 system for good and reliable dynamic position keeping via 2 Azimuth, 2 Retractable and 1 tunnel thruster.

Good transit speed of 12 knots is achieved in very economic way due to use of HFO. Ice Class B confirms the vessel robustness and suitability for operation in cold areas and winter condition.

Accommodation for 240 persons is arranged by 8 1-men suites, 12 1-man cabins, 22 2-man cabins and 44 4-men cabins. The vessel is dual classed; CCS and ABS.

HLCV HIGHLIGHTS

- Powerful, 3000 t Heavy Lift Crane Vessel, Special Purpose Ship, Salvage Ship, Ice Class B
- Excellent motion and position keeping
- Very economic in consumption (HFO) while maintaining good transit speed
- High Total Installed Power Generation: 22.620 kW
- Accommodation for 240 POB
- Generous Free Deck Area of 2500 m² (10 ton/m²)

NAME AND BACKGROUND

Port of Registry : Shanghai
 IMO : 9597628
 Built : 26/08/2010
 Call Sign. : B9BA

GENERAL

★CSA Floating Crane, Salvage Ship, Ice Class B Helicopter Facilities, In-Water Survey
 ★CSM DP2, CCS No.:10J0173
 ABS A1, AMS, DPS-2, ABS Class. No.: 10225372

Builder ID : ZPMC1206

PRINCIPAL PARTICULARS

L.O.A. (Length Over All) : 141,00 m
 Breadth : 40,00 m
 Depth : 12,80 m
 Draught (Lifting) : 8,50 m
 Draught (Navigation) : 5,60 m
 Displacement (Lifting) : 41.300 t
 Displacement (Navigation) : 26.000 t

PROPULSION MACHINERY

Total Thrust Power : 22.620 kW
 Azimuth Propeller : 2 x 4.500 kW
 Retractable Thrusters : 2 x 2.000 kW
 Tunnel Thruster : 1 x 2.000 kW
 Rated Speed : 12 kn

POWER GENERATION

Total Gen. Power : 22.620 kW
 Main Gen. : 4 x 4.500 kW
 6.600 V / 50 Hz
 Aux Gen. : 2x 21.00 kW
 6.600 V / 50 Hz

All engines (prime movers) made by MAN-STX.

DYNAMIC POSITIONING

DP2, Wind Speed Level 6, Current 3 kn

POSITION CONTROL SYSTEM

Kongsberg K-Pos DP2, K-Thrust, K-Winch, K-Chief700, K-Bridge, K-Line

Hardware and Software integrated into Vessel Control System.

DECK MACHINERY

FullRev. Heavy Lift Crane : Cap. 3000 t
 Working Radius : 19,5 m – 73,2 m
 Lifting Distance : 86 m (Main) 2,4 m/min
 250 m (Aux.) 11.7 m/min
 111 m (Whip) 59 m/min
 Positioning Winch : 8 sets, 2600 kn BL
 Wire diam. / Storage Cap. : Ø66 mm / 2000 m
 Mooring Depth : 200 m
 Windlass : 2 sets / Cap. 20 t
 Weight of Anchors : 8 x 7,8 t

ACCOMMODATION

POB : 240
 Max. Crew : 42
 Max. Client : 196
 Min. Safe Manning : 14



revision 1.2

HOLDING OOS INTERNATIONAL GROUP B.V.

The Netherlands

Head Office The Netherlands

OOS International B.V.
Oostkapelseweg 4
4353 EH Serooskerke (W)
The Netherlands

E: Sales@oosinternational.com
T: +31 (0) 118 726 200

Chamber of Commerce No. 20149791
VAT No. NL8204.64.624.B.01

OOS Asia Pacific Pte. Ltd.

OOS Singapore

Office 3791 Jalan Bukit Merah
#09-24 (E-Centre @ Redhill)
Singapore 159471
T: +65 6732 1983

OOS China

No.1 Xin An Jiang Road, Bin Jiang Street
Haimen, Jiangsu Province
P.R. China
P.C. 226116
T: +86 0513 8128 7430

OOS International do Brazil Servicos Maritimos Ltda.

Rua Internacional
261 - Vale Encantado Macaé - Rio de
Janeiro, Brazil
CEP 27.933-377
T: +55 22 2020 0500

OOS Energy de Mexico SA de CV.

Office Mexico City
Circuito Circunvalacion Poniente 149
Satelite
Naucalpan de Juarez
Estado de Mexico
C.P. 53100
Mexico